

Heavy Commercial Vehicles

Circulate to:	Service Manager	Body Shop Manager	Parts Manager	Foremen	Receptionists	Technicians
	✓	✓	✓	✓	✓	✓

Subject: New Design Oil Pressure Sensor Replacement and Installation Procedure

Model : CARGO H298/H476

SUMMARY: In this bulletin you can find the changing procedure of new design oil pressure sensor(AC46 6C742 AA). Vehicles with VIN number after 84517 have the wiring with part number 6C46 12A690 AC / BC46 12A690 AB, there is **no** connector incompatibility between the wiring and new design oil pressure sensor. Therefore , new design oil pressure sensor(AC46 6C742 AA) can be installed with this wiring properly.

On the other hand vehicles with VIN number before 84517 has **old design** wiring and when new design oil pressure sensor is to be installed on this wiring, connector incompatibility occurs. In this case wiring with part number *CC46-14004-AA* must be used in order to install new design oil pressure sensor(AC46 6C742 AA) to older wiring.

Special Tool

<u>Labour Code</u>	<u>Labour Description</u>	<u>Labour Time</u>
21C067	Replacement of engine oil pressure sensor and connector	0,25h

<u>Faulty Part</u>	<u>Repair Code</u>	<u>Customer Complaint Code</u>
--------------------	--------------------	--------------------------------

Service instructions to be followed is shown below:

Connector : 967325-1 **Connector Cover:** 965783-1

Terminal : 929974-1 **Wiring Seal:** 79470 **Connector Cab :** 282081-1

Kit Part Number: *CC46-14004-AA*

- 1- Stop the engine and be sure that switch is at '0' position.



- 2- To cut the power of the truck, choose the most suitable one from the following and apply.

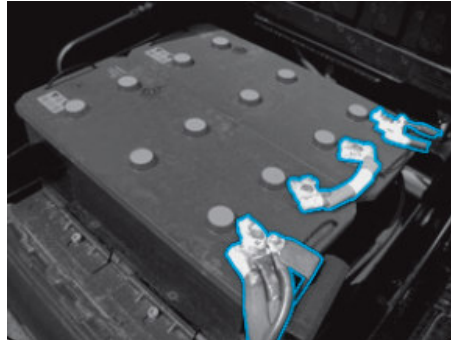
2-1- By turning off the battery switch,



2-2- By turning off the Battery Master Switch (ADR Vehicles),



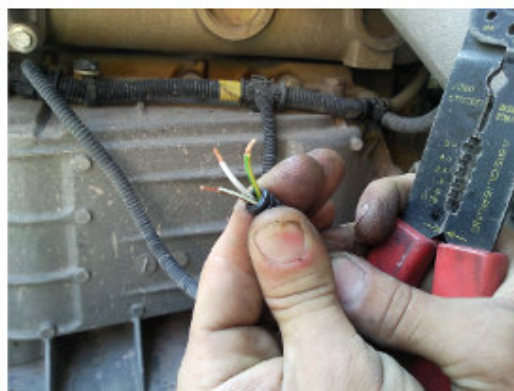
2-3- By removing Battery Pole Heads,



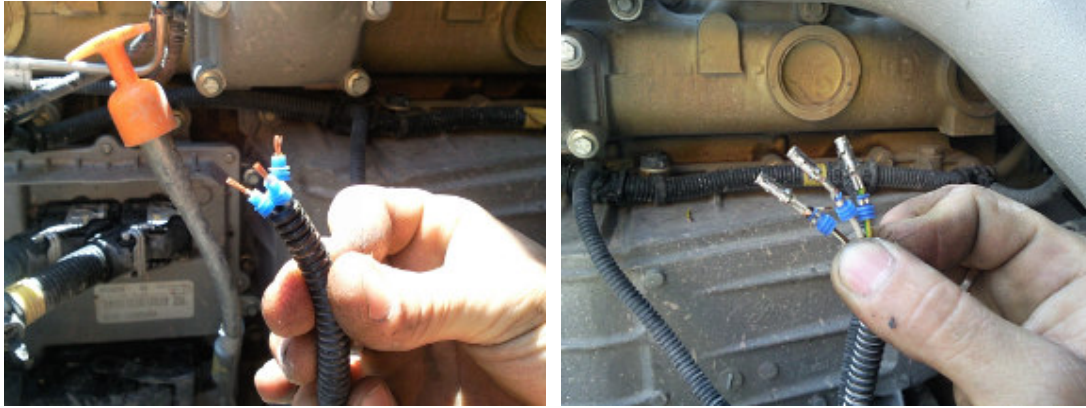
3- Remove the old level Oil Pressure Sensor and install the new one.



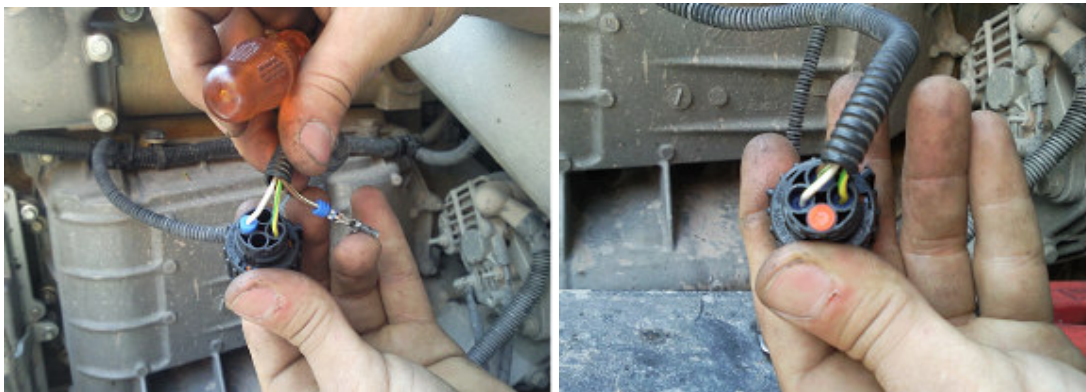
4- Remove the old connector from the wiring and remove the cover of the wiring,



5- Install the gaskets and terminals to the wiring.



6- Fit the wiring to the connector and install the gasket on the free slot.



- Pin1 – Yellow / Green
- Pin2 – White / Green
- Pin3 – Gasket - plug
- Pin4 – White / Brown

7- Install the cover of connector and strap,



8- Make the connection of the connector to the sensor.



9- Check the applied procedure



The engine shall be turned on and be sure that there is no any warning lamp on the cluster. Also please check the oil pressure needle.

Please be informed,

**Truck Service Engineering
Ford Otomotiv San. A.Ş.**